

CMU Cadaveric Course 2022

Intensive Hands-On Cadaveric Workshop

in

Complex Cervical & Thoracic Spinal Decompression & Stabilization

CMU Cadaveric Course 2022

- Date
 - December 1-2, 2022
- Venue
 - Cadaveric Surgical Training Center
- Course Dinner
 - Samsen Villa Riverside Restaurant



Faculty & Instructors (6)

- Course Chairman & Co-Chairman
 - Torphong Bunmaprasert, MD.
 - torpong197@gmail.com
 - Nantawit Sugandhavesa, MD.
- Course Secretariats
 - Wongthawat Liawrungrueang, MD.
 - mint11871@hotmail.com
 - Ms. Natesai Pramuanthong
 - misssaisweeteye@gmail.com
- Instructors (6 Stations)
 - Nantawit Sugandhavesa, MD.
 - Sirichai Wilartratsami, MD.
 - Panupol Rajinda, MD.
 - Torphong Bunmaprasert, MD.
 - Panya Luksanapruksa, MD.
 - Weera Chiyamonkol, MD.
 - Wongthawat Liawrungrueang, MD.

Participants (24) – 6 stations

- Participants

- Thai surgeons (14)
- International surgeons (10)

- Singapore
- Malaysia
- Vietnam
- Indonesia

เก็บค่าลงทะเบียน
คนละ 1,500 US\$

- Minimum Requirement

- Orthopaedists / Neurosurgeon
- 1-3 experiences in Spine Surgery

- Thai Participants (tentative)

- 3 Spine Fellows (CMU)
- Spine Fellows (Siriraj) ???
- Medtronics (Majority)
- 1 Carl Zeiss





**CMU Cadaveric
Course 2018**

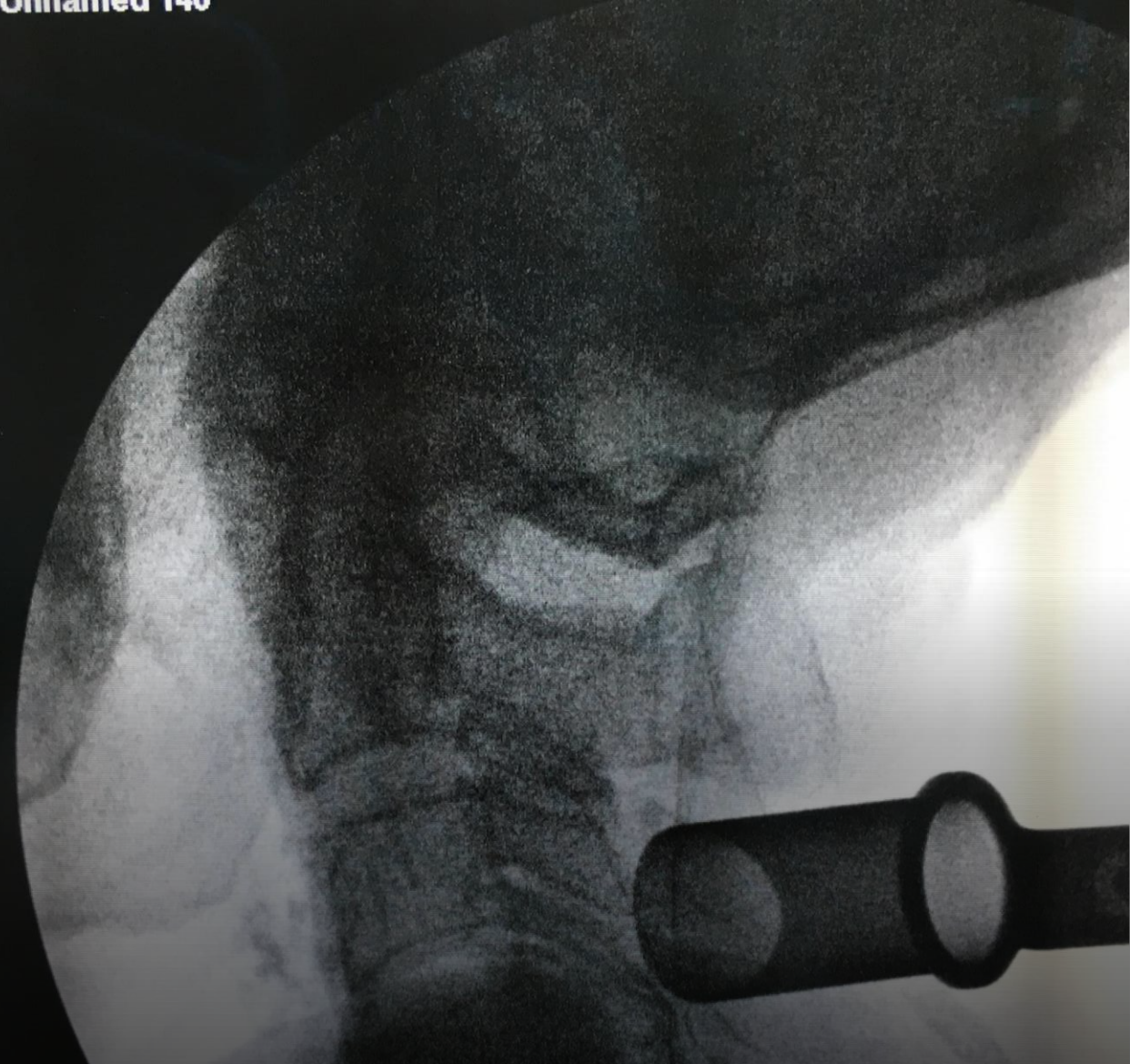
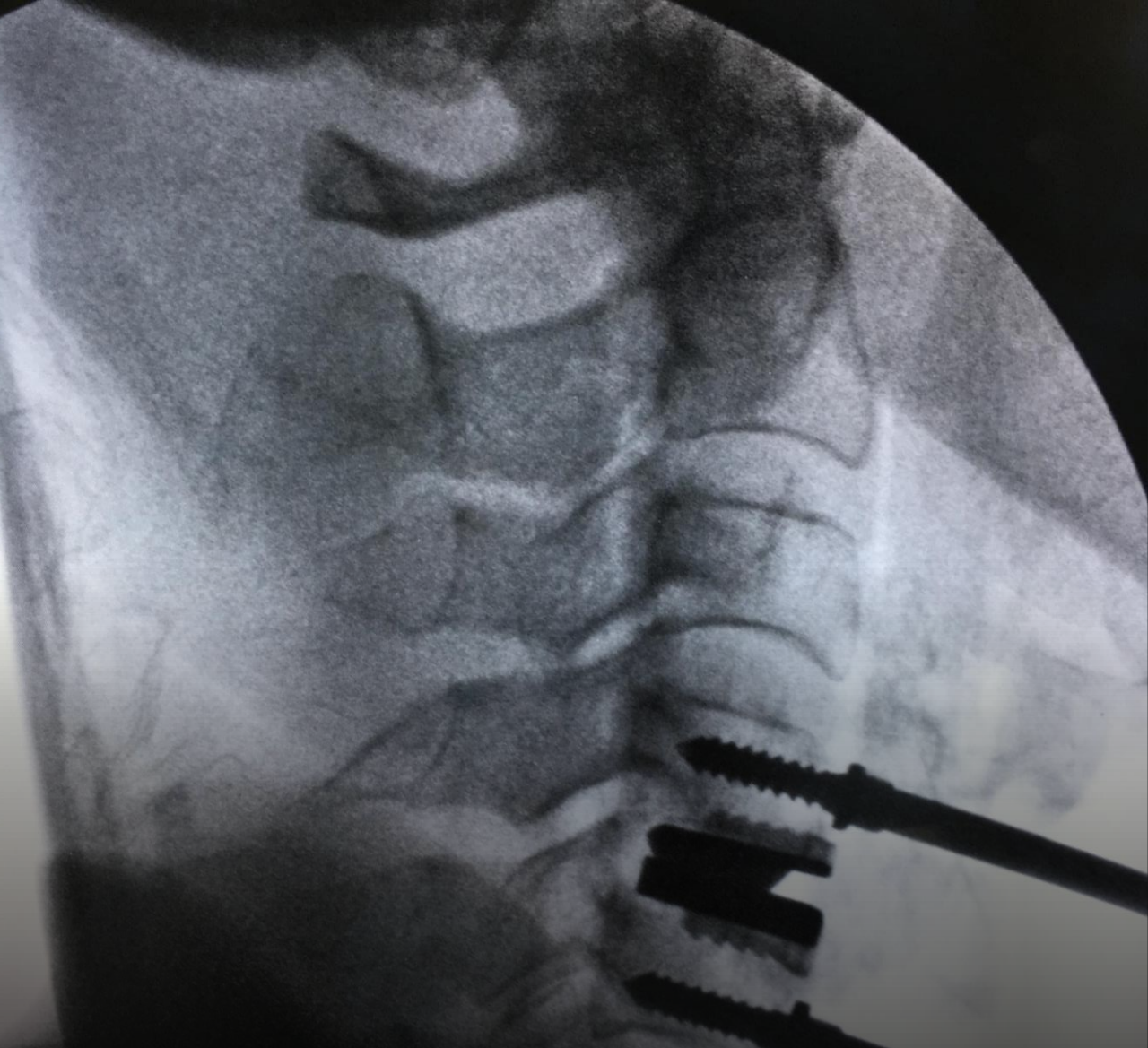
Topics

Anterior Surgery

- Cervical Total Disc Replacement (C-TDR)
- Anterior Corpectomy & Reconstruction
- Anterior C-T approach (T1-T4)
- Transoral Odontoidectomy
- Dissection of Vertebral Artery

Posterior Surgery

- Atlanto-Axial (C1-C2) fixation
- Cervical Pedicle Screw fixation
- Cervical Laminoplasty
- C7-T1 Pedicle Subtraction Osteotomy (Sagittal deformity)
- Dissection of Vertebral Artery



CMU Cadaveric Surgical Training Center Facilities

- 6 Fresh Human Cadavers (Whole Body)
- 3 Fluoroscopy
 - 2 C-arm(s) needed to be rent (SODEXO)
- Retractors
- Basic Spine Instruments
- Lead Gown (40)
- X-rays shields ฉากกั้นรังสี (3)



Estimated Expense (Thai Baht)

6 Fresh Human Cadavers

2 Fluoroscopy Rental

Management/Day

Conference/Day

Airfare for Prof. Sirischai, Panya, Panupol, Weera

Accommodation for Prof. Sirischai, Panya, Panupol,
Weera

Implants & Instruments

- Ortho CMU & Training Center
- Medtronic
- Carl Zeiss
- JPL
- Johnson & Johnson
- Phillips ??? (Fluoroscopy)



Ortho CMU & Training Center

- Basic Spine Instruments
- Retractors
- Additional Lead Gowns
- X-rays Shield



Medtronics

Anterior Surgery

- Cervical Total Disc Replacement (C-TDR) – **PRESTIGE-LP**
- Anterior Corpectomy & Reconstruction – **Pyramesh cage, Titanium Cage, Zevo plate**
- Anterior C-T approach (T1-T4)
- Transoral Odontoidectomy
- Dissection of Vertebral Artery

Mias Rex MR-8 6 stations

Model C-spine (with VA) 6 stations

Posterior Surgery

- Atlanto-Axial (C1-C2) fixation – **Infinity / Vertex**
- Cervical Pedicle Screw fixation – **Infinity / Vertex**
- Cervical Laminoplasty - **Centerpiece**
- C7-T1 Pedicle Subtraction Osteotomy (Sagittal deformity) – **PSO set**
- Dissection of Vertebral Artery

Carl Zeiss – surgical microscope 3 เครื่อง

Anterior Surgery

- Cervical Total Disc Replacement (C-TDR) – **Kinevo 900** มี จอ ในตัว + จอ 3D จำนวน 1 เครื่อง
- Anterior Corpectomy & Reconstruction – **Tivato 700** มี จอ ในตัว + จอ 40 นิ้ว จำนวน 1 เครื่อง
- Anterior C-T approach (T1-T4)
- Transoral Odontoidectomy – **Extaro 300** กล้อง ENT จะไม่มีเลนส์ผู้ช่วยด้านข้างและด้านตรงข้าม จำนวน 1 เครื่อง
- Dissection of Vertebral Artery

Posterior Surgery

- Atlanto-Axial (C1-C2) fixation
- Cervical Pedicle Screw fixation
- Cervical Laminoplasty
- C7-T1 Pedicle Subtraction Osteotomy (Sagittal deformity)
- Dissection of Vertebral Artery

JPL- Misonix Ultrasonic Osteotome (2 sets)

Anterior Surgery

- Cervical Total Disc Replacement (C-TDR)
- Anterior Corpectomy & Reconstruction
- Anterior C-T approach (T1-T4)
 - Misonix – Manubrectomy, Sternotomy
- Transoral Odontoidectomy
- Dissection of Vertebral Artery

Posterior Surgery

- Atlanto-Axial (C1-C2) fixation
- Cervical Pedicle Screw fixation
- Cervical Laminoplasty
- C7-T1 Pedicle Subtraction Osteotomy (Sagittal deformity)
 - Misonix – 10 mm blade for posterior cervical osteotomies
- Dissection of Vertebral Artery

Johnson & Johnson (J&J Ethicon)

Anterior Surgery

- Cervical Total Disc Replacement (C-TDR)
- Anterior Corpectomy & Reconstruction
- Anterior C-T approach (T1-T4)
- Transoral Odontoidectomy
- Dissection of Vertebral Artery

Posterior Surgery

- Atlanto-Axial (C1-C2) fixation
 - SurgiFlo hemostatic matrix (in adult fresh cadavers, it may possibly preserve venous bleeding)
- Cervical Pedicle Screw fixation
- Cervical Laminoplasty
- C7-T1 Pedicle Subtraction Osteotomy (Sagittal deformity)
 - Closure
- Dissection of Vertebral Artery



PROGRAM AT-A-GLANCE

Time	Day 1 (Dec 1)		Day 2 (Dec 2)	
8.00 – 8.30	Registration / Welcome Speech /Course Introduction		Registration / Introduction to Day 2	
8.30 – 9.30	Lecture / Discussion / Q & A			
	Group A	Group P	Group P	Group A
9.30 – 10.00	Morning Break & Proceed to Lab			
10.00 – 12.00	LAB A (1) 3 C-Arm	LAB P (1)	LAB P (1)	LAB A (1) 3 C-Arm
12.00 – 13.00	Lunch / Group Photo (Day 2)			
13.00 – 14.30	LAB A (2)	LAB P (2) 3 C-Arm	LAB P (2) 3 C-Arm	LAB A (2)
	Afternoon Break (Refreshment)			
14.45 – 16.15	LAB A (2) cont.	LAB P (2) cont. 3 C-Arm	LAB P (2) cont. 3 C-Arm	LAB A (2) cont.
16.15 – 17.00	<ul style="list-style-type: none"> • Wrap – up Day 1 • Return to Hotel 		<ul style="list-style-type: none"> • Wrap – up Day 2 • Course Certificate Achievement / Evaluation 	
19.00 – 22.00	Course Dinner		Adjourn	

Time	CMU Cadaveric Course 2022 (Day 1) Dec. 1, 2022				
8.00-8.30	Registration, Welcome Speech, Course Introduction				Torphong
8.30-9.30	Lecture Group A		Lecture Group P		
	8.30-8.40 Cervical Total Disc Replacement 8.40-8.50 Transoral Odonotidectomy 8.50-9.00 Ant. C Corpectomy, Reconstruction & Stabilization 9.00-9.10 Ant. Approach T1-T4 (infection, tumor, fractures) 9.10-9.20 Vertebral Artery Anatomy & Variations (Anterior) 9.20-9.30 Discussion, Q&A	Torphong Torphong Weera Panya Panya	8.30-8.40 C1 Fixation 8.40-8.50 C2 Fixation 8.50-9.00 Cervical Laminoplasty, Subaxial Cervical Pedicle Screw fixation 9.00-9.10 C7-T1 PSO 9.10-9.20 Vertebral Artery Anatomy & Variations (Posterior) 9.20-9.30 Discussion, Q&A	Panupol Panupol Wongthawat / Nantawit Sirichai Sirichai	
9.30-10.00	Morning Break & Proceed to Lab.				
10.00-12.00	Lab A(1)		Lab P(1)		All Faculty
12.00-13.00	Lunch				
13.00-14.30	Lab A(2)		Lab P(2)		All Faculty
14.30-14.45	Afternoon Break & Refreshment				
14.45-16.15	Lab A(2) cont.		Lab P(2) cont.		All Faculty
16.15-17.00	Wrap-up Day 1, Return to Hotel Accommodation				
19.00-22.00	Course Dinner (Samsen Villa Riverside Restaurant)				

Time	CMU Cadaveric Course 2022 (Day 2) Dec. 2, 2022				
8.00-8.30	Registration, Welcome Speech, Course Introduction				Torphong
8.30-9.30	Lecture Group P		Lecture Group A		
	8.30-8.40 C1 Fixation 8.40-8.50 C2 Fixation 8.50-9.00 Cervical Laminoplasty, Subaxial Cervical Pedicle Screw fixation 9.00-9.10 C7-T1 PSO 9.10-9.20 Vertebral Artery Anatomy & Variations (Posterior) 9.20-9.30 Discussion, Q&A	Panupol Panupol Wongthawat / Nantawit Sirichai Sirichai	8.30-8.40 Cervical Total Disc Replacement 8.40-8.50 Transoral Odonotidectomy 8.50-9.00 Ant. C Corpectomy, Reconstruction & Stabilization 9.00-9.10 Ant. Approach T1-T4 (infection, tumor, fractures) 9.10-9.20 Vertebral Artery Anatomy & Variations (Anterior) 9.20-9.30 Discussion, Q&A	Torphong Torphong Weera Panya Panya	
9.30-10.00	Morning Break & Proceed to Lab.				
10.00-12.00	Lab P(1)		Lab A(1)		All Faculty
12.00-13.00	Lunch & Group Photo				
13.00-14.30	Lab P(2)		Lab A(2)		All Faculty
14.30-14.45	Afternoon Break & Refreshment				
14.45-16.15	Lab P(2) cont.		Lab A(2) cont.		All Faculty
16.15-17.00	Wrap-up Day 2, Course Certificate Achievement, Evaluation Adjourn				

Group A Lab

	Position	Procedures	CMU team	Medtronic	Carl Zeiss	JPL	J&J		
A1 (ថ្នាំ)	Supine	<p><u>C-TDR</u></p> <p>4-levels</p> <p>C3-4 C4-5 C5-6 C6-7 } One participant for each level</p>	<ul style="list-style-type: none"> Basic Spine instruments 3 C-arm Retractors Suction 	<ul style="list-style-type: none"> PRESTIGE-LP 3 sets Caspar pins 3 sets Midas MR8 3 sets 	<ul style="list-style-type: none"> Kinevo 900 Tivato 700 Extaro 300 				
A2 (ឃ្លា)	Supine	<p><u>Lower C-spine</u></p> <p>Corpectomy</p> <p>VB Reconstruction</p>	<ul style="list-style-type: none"> Basic Spine instruments Rongeurs 	<ul style="list-style-type: none"> Midas MR8 Cages (Pyramesh, Expandable, Titanium) 	<ul style="list-style-type: none"> Kinevo 900 				
		<p><u>Upper T (T1-T4)</u></p> <p>Surgical Approach</p> <p>Sternotomy</p> <p>Manubrectomy</p>	<ul style="list-style-type: none"> Basic Spine instruments Rongeurs Wiring set 	<ul style="list-style-type: none"> Midas MR8 	<ul style="list-style-type: none"> Extaro 300 	<ul style="list-style-type: none"> Misonix 			
		<p><u>Upper C-spine</u></p> <p>Transoral</p> <p>Odonotidectomy</p> <p>VA dissection</p>	<ul style="list-style-type: none"> Basic Spine instruments Kerrison rongeur ENT retractor 	<ul style="list-style-type: none"> Midas MR8 	<ul style="list-style-type: none"> Tivato 700 		<ul style="list-style-type: none"> Surgiflo 		

Group P Lab

	Position	Procedures	CMU team	Medtronic	Carl Zeiss	JPL	J&J
P1 (ថ្ងៃ)	Prone	C3-C7 Laminoplasty C3-C7 Foraminotomy	<ul style="list-style-type: none"> Basic Spine instruments Adson Cerebellum retractor Kerrison rongeurs Suction 	<ul style="list-style-type: none"> CENTERPIECE Laminoplasty Plate Midas MR8 3 sets 		<ul style="list-style-type: none"> Misonix 	
		C7-T1 Pedicle Subtraction Osteotomy (PSO)	<ul style="list-style-type: none"> Basic Spine instruments Adson Cerebellum retractor Kerrison rongeurs Suction 	<ul style="list-style-type: none"> PSO deformity sets 		<ul style="list-style-type: none"> Misonix 	
P2 (រៀប)	Prone	C1-C2 Fixation	<ul style="list-style-type: none"> Basic Spine instruments Adson Cerebellum retractor C-Arm 	<ul style="list-style-type: none"> INFINITY Posterior cervical system VERTEX Posterior cervical system Midas MR8 			<ul style="list-style-type: none"> SurgiFlo hemostatic matrix
		C3-C6 Pedicle Screw Fixation	<ul style="list-style-type: none"> Basic Spine instruments Rongeurs Wiring set C-Arm 	<ul style="list-style-type: none"> INFINITY Posterior cervical system VERTEX Posterior cervical system Midas MR8 		<ul style="list-style-type: none"> Misonix 	
		VA dissection	<ul style="list-style-type: none"> Basic Spine instruments Kerrison rongeur ENT retractor 				<ul style="list-style-type: none"> Ethicon for closure by surgeons